

**HINSON**

CLUTCH COMPONENTS

*RACING*



[WWW.TECHNICAL-TOUCH.COM](http://WWW.TECHNICAL-TOUCH.COM)



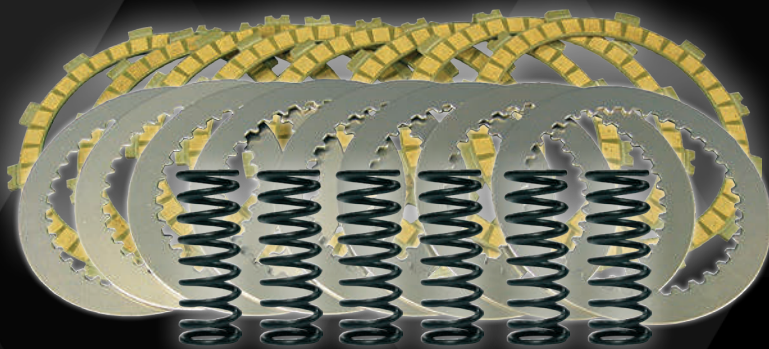
# CONTENTS

	page
Introduction	4
Honda	6
Yamaha	8
Kawasaki	10
Suzuki	12
KTM	14
Husqvarna	22
ATV	26
Social Media Engagement	30

The name Hinson needs no more introduction!  
For years it is known to be the best brand of  
high performance clutches, chosen by all the  
best rude riders and professional teams.

## Pressure Plates

- Used by all major factory teams and riders
- Improves clutch performance and life
- Precision machined from billet T-6 aircraft quality aluminium to aerospace tolerances
- Special anodized process for more resistance
- Resists up to five times more than stock (with



## FSC-Kit

(fiber and steel clutch plates and clutch springs)

- Tested and raced with all the same high quality standards as all Hinson clutch components
- High production tolerances to perfectly match Hinson clutch basket,

## BTL (Back Torque Limiter)

### Series Inner Hub/Pressure Plate Kit

- Inner Hub/pressure plate combination that lets the clutch spin when braking on the engine
- Positive effect on braking bumps and better braking control
- More stable bike
- MotoGP developed slipper clutch technology
- Fully adjustable slip range
- Less kick back under braking (MX)
- Easier to slide in the corners
- Simple installation, no tools needed
- Improves clutch performance and life
- Precision machined from billet T-6 aircraft quality aluminium to aerospace tolerances
- Special anodized process for more resistance

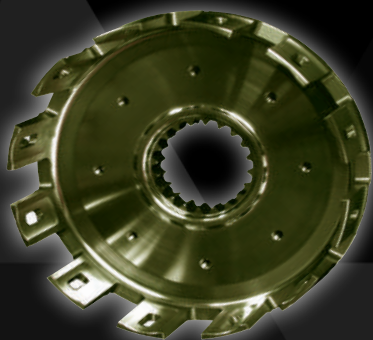
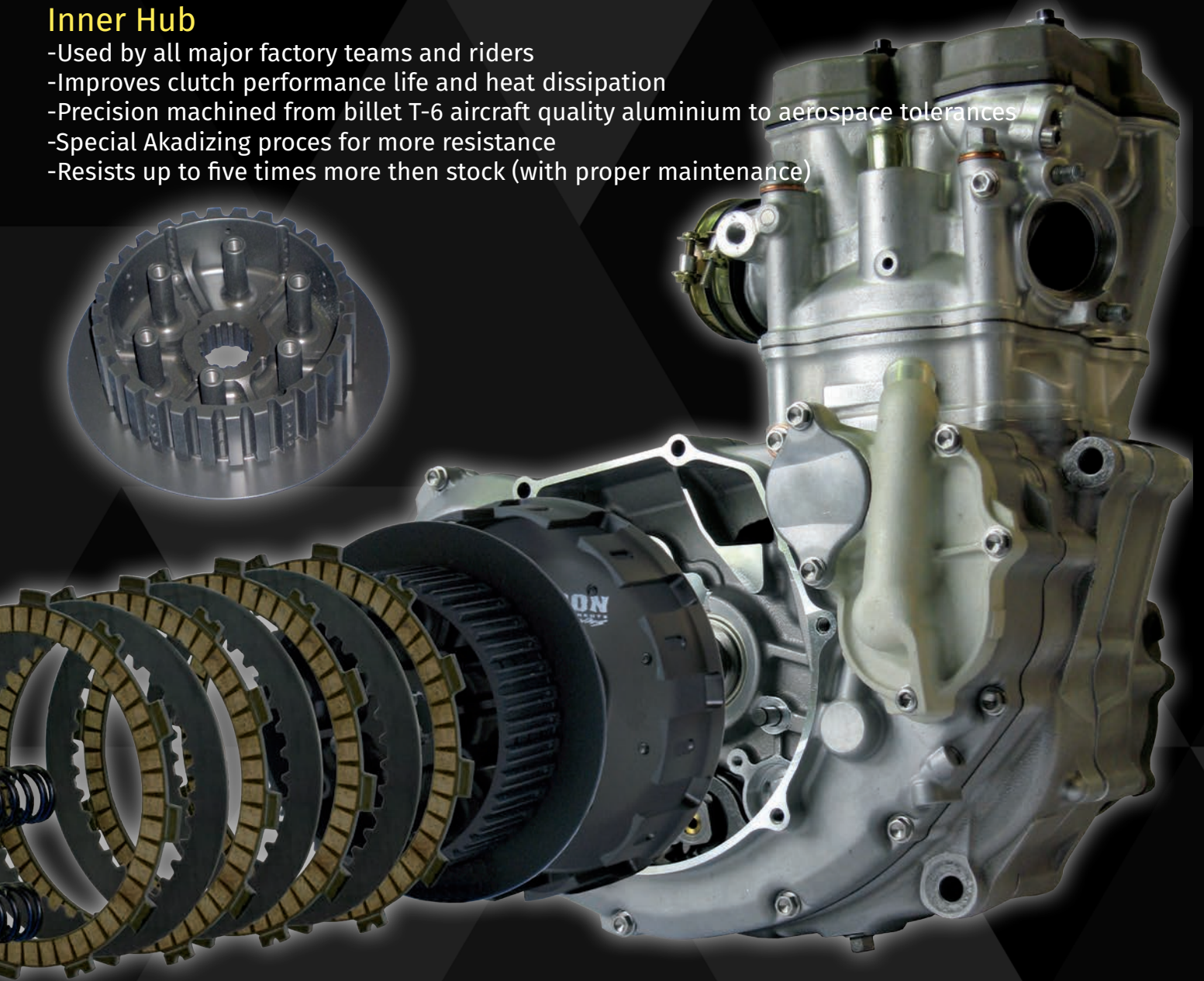
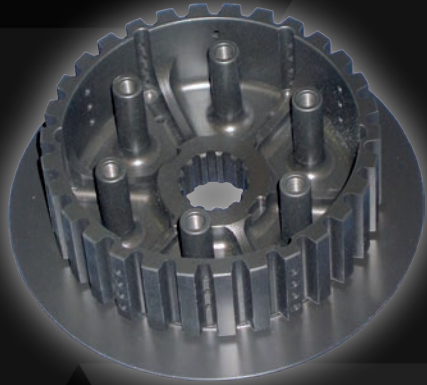


## Clutch Covers

- Race proven worldwide by most factory Teams
- Improves heat dissipation
- Stronger than stock
- Precision machined from billet T-6 aircraft quality aluminium to aerospace tolerances
- Highly recommended to avoid unfortunate oil loss

## Inner Hub

- Used by all major factory teams and riders
- Improves clutch performance life and heat dissipation
- Precision machined from billet T-6 aircraft quality aluminium to aerospace tolerances
- Special Akadizing proces for more resistance
- Resists up to five times more then stock (with proper maintenance)



## Steel Clutch Baskets

- Tested and raced with all the same high quality standards as all Hinson clutch components
- High production tolerances to perfectly match Hinson clutch basket, enhancing clutch baskets and plates
- Special inertia quality acts as 'fly wheel'

## Clutch Baskets

- Used by all major factory teams and riders
- Improves clutch performance and life
- Precision machined from billet T-6 aircraft quality aluminium to aerospace tolerances
- Special akadized proces for more resistance
- Resists up to five times more then stock (with proper maintenance)

# HONDA



Model	From	Till	Clutch Basket	Inner Hub	Pressure Plate	IH/PP Kit	Clutch Cover	FSC-Kit
CRF150R	2007	2011	H290 <sup>1</sup>	H292	H291		C390	FSC290-6-001
	2012	2019	H390 <sup>1/3</sup>	H292	H291		C390	FSC290-6-001
CRF250R	2004	2009	H094 / H253 <sup>1</sup>	H222	H109	H235	C094	FSC094-8-001
	2010	2013	H494 <sup>2</sup>	H422	H409	H335	C494	FSC494-8-001
	2014	2017	H494 <sup>2</sup>	H422	H409	H335	C494	FSC494-8-001
	2018	2019	H794-B-1803 <sup>1</sup>	H422	H794-PP-0817		C794-0817	FSC494-8-001
CRF250X	2004	2008	H094 / H253 <sup>1</sup>	H222	H109		C253	FSC094-8-001
CRF250X/RX	2019	2019	H794-B-1803 <sup>1</sup>	H422	H794-PP-0817		C794-0817	FSC494-8-001
CRF450R	2008	2008	H489 <sup>2</sup>	H165	H164-002	H223	C224	FSC154-8-001
CRF450R (4-spring)	2009	2012	H489 <sup>2</sup>	H365	H364	H323	C389	FSC389-8-001
CRF450R (6-spring)	2009	2012	H489 <sup>2</sup>			H397	C389	FSC154-8-001
CRF450R	2013	2016	H589 <sup>2</sup>			H497	C389	FSC154-8-001
CRF450R(X) (7 plate)	2017	2018	H889-B-1704 <sup>2</sup>			H789-IP-0217	C789-0816	FSC789-7-0616
CRF450R(X) (8 plate)	2017	2018	H889-B-1704 <sup>2</sup>			H789-IP-0317	C789-0816	FSC154-8-001
CRF450R(X) (9 plate)	2017	2018	HC989-1901 (complete clutch kit, spare parts are only compatible with the full Hinson clutch)					
CRF450R(X)/WE (7plate)	2019	2019	H889-B-1704 <sup>2</sup>			H789-IP-1901	C789-0816	FSC789-7-0616
CRF450R(X)/WE (8plate)	2019	2019	H889-B-1704 <sup>2</sup>			H889-IP-1901	C789-0816	FSC154-8-001
CRF450R(X)/WE (9plate)	2019	2019	HC989-1901 (complete clutch kit, spare parts are only compatible with the full Hinson clutch)					
CRF450X	2005	2009	H389 <sup>1</sup>			H223X	C154X	FSC154-8-001
	2012	2017	H389 <sup>1</sup>			H223X	C154X	FSC154-8-001
CRF450L	2019	2019	H297-B-01901			H789-IP-1901	C789-0816	FSC789-7-0616

REMARKS

1 with cushions  
 2 with cushions and kick-starter gear  
 3 requires Hinson installation of gear  
 4 right side only



Actuation	BTL	Single Spring Kit	Steel Basket	Oil Filler Cap	Engine Plug Kit	Backing Plate Kit	Cushions	Spring Kit
	BTL290			OC154X		BP290	CU299	
	BTL290			OC154X		BP290	CU299	
	BTLO94	SS094	HS094 <sup>1</sup>	OC154X	EPK494	BP026	CU299	CS294-5-0109
	BTLO94	SS094	HS494 <sup>2</sup>	OC154X	EPK494	BP026	CU299	CS330-5-0509
CB494	BTLO94	SS094	HS494 <sup>2</sup>	OC154X	EPK494	BP026	CU299	CS330-5-0509
						BP026	CU299	CS189-5-0613
	BTLO94	SS094	HS094 <sup>1</sup>			BP026	CU299	CS294-5-0109
						BP026	CU299	CS189-5-0613
	BTL154	SS189	HS489 <sup>2</sup>	OC154X		BP197	CU199	CS189-6-1015
AK489	BTL389	SS389	HS489 <sup>2</sup>	OC154X	EPK489	BP197	CU199	CS389-4-0109
AK489	BTL389	SS389	HS489 <sup>2</sup>	OC154X	EPK489	BP197	CU199	CS189-6-1015
CB589 / AK489	BTL589	SS589	HS589 <sup>2</sup>	OC154X	EPK489	BP197	CU199	CS189-6-1015
CB789-0417			HS889-B-1704 <sup>2</sup>			BP789	CU789-1701	CS189-6-0613
CB789-0417			HS889-B-1704 <sup>2</sup>			BP789	CU789-1701	CS189-6-0613
CB789-0417						BP789	CU789-1701	CS189-6-0613
CB789-0417			HS889-B-1704 <sup>2</sup>			BP789	CU789-1701	CS189-6-0613
CB789-0417			HS889-B-1704 <sup>2</sup>			BP789	CU789-1701	CS189-6-0613
CB789-0417						BP789	CU789-1701	CS189-6-0613
	BTL389X		HS389 <sup>1</sup>	OC154X <sup>4</sup>	EPK489	BP197	CU199	CS189-6-1015
	BTL389X		HS389 <sup>1</sup>	OC154X <sup>4</sup>	EPK489	BP197	CU199	CS189-6-1015
								CS189-6-0613

# YAMAHA



Model	From	Till	Clutch Basket	Inner Hub	Pressure Plate	IH/PP Kit	Clutch Cover	FSC-Kit
YZ65	2018	2019	H159/H160 <sup>3</sup>					
YZ85	2002	2019	H159/H160 <sup>3</sup>	H380	H379	H381	C159	FSC159-7-001
YZ125	2005	2019	H240 <sup>1</sup>	H071	H146		C240	FSC053-8-001
YZ250	2001	2019	H054 <sup>1</sup>	H073	H099		C054	FSC213-8-001
YZ250X	2016	2019	H054 <sup>1</sup>	H073	H099		C054	FSC213-8-001
YZ250F	2003	2008	H141	H142	H146		C141	FSC141-9-001
	2009	2013	H341 <sup>1</sup>	H142	H146		C141	FSC141-9-001
	2014	2018	H441 <sup>1</sup>	H342	H146		C441	FSC441-9-001
	2019	2019	H641-B-1901 <sup>1</sup>	H641-IH-1901	H641-PP-1901		C641-1901	FSC641-8-1901
YZ250FX	2015	2019	H441 <sup>1</sup>	H342	H146		C441	FSC441-9-001
YZ450F	2007	2009	H216 / H316 <sup>2</sup>	H198	H212		C196	FSC213-8-001
	2010	2019	H216 / H316 <sup>2</sup>	H198	H212		C416	FSC213-8-001
YZ450FX	2016	2018	H216 / H316 <sup>2</sup>	H198	H099		C416	FSC196-9-001
	2019	2019	H216 / H316 <sup>2</sup>	H198	H212		C416	FSC213-8-001
WR250F	2001	2003	H141	H142	H070		C141	FSC141-9-001
	2015	2018	H441 <sup>1</sup>	H242	H070		C441	FSC441-9-001
WR450F	2004	2015	H216 / H316 <sup>2</sup>	H198	H099		C196	FSC196-9-001
REMARKS			1 with kickstarter gear	3 with cushions, kickstarter and primary gears				
			2 with cushions	4 cushion kit with gears and backing plate				





Actuation	BTL	Single Spring Kit	Steel Basket	Oil Filler Cap	Engine Plug Kit	Backing Plate Kit	Cushions	Spring Kit
				OC213				CS159-5-001
				OC213				CS341-5-0311
				OC213		BP054		CS216-6-0315
				OC213		BP054		CS216-6-0315
	BTL141			OC213				CS341-5-0311
	BTL141			OC213		BP341		CS341-5-0311
	BTL141			OC213		BP341		CS341-5-0515
	BTL641-1901							CS641-6-1901
	BTL141			OC213		BP341		CS341-5-0515
	BTL213	SS213	HS216 / HS316 <sup>2</sup>	OC213		BP054	CU216	CS216-6-0315
	BTL213	SS213	HS216 / HS316 <sup>2</sup>	OC213		BP054	CU216	CS216-6-0315
	BTL196	SS196	HS216 / HS316 <sup>2</sup>	OC213		BP054	CU216	CS216-6-0315
	BTL213	SS213	HS216 / HS316 <sup>2</sup>	OC213		BP054	CU216	CS216-6-0315
				OC213				CS341-5-0311
	BTL141			OC213		BP341		CS341-5-0515
	BTL196	SS196	HS216 / HS316 <sup>2</sup>			BP054	CU216	CS216-6-0315

# Kawasaki



Model	From	Till	Clutch Basket	Inner Hub	Pressure Plate	IH/PP Kit	Clutch Cover	FSC-Kit
KX65	2000	2019	H075					
KX85	2001	2019	H068	H077	H076		C068	FSC068-6-001
KX100	1998	2019	H068	H077	H076		C068	FSC068-6-001
KX125	2003	2008	H195 <sup>1</sup>		H218 <sup>2</sup>	H031	C195	FSC195-7-001
KX250	2019	2019	H257 <sup>1</sup>	H257-IH-1801	H218		C357	FSC357-8-001
KX250F	2006	2008	H257 <sup>1</sup>	H219	H218		C217	FSC357-8-001
	2009	2017	H257 <sup>1</sup>	H219	H218		C357	FSC357-8-001
	2018	2019	H257 <sup>1</sup>	H257-IH-1801	H218		C357	FSC357-8-001
KX450F	2006	2008	H263 / H363 <sup>3</sup>			H267	C263	FSC263-8-001
	2009	2015	H263 / H363 <sup>3</sup>			H267	C263	FSC263-8-001
	2016	2018	H263 / H363 <sup>3</sup>			H267	C463	FSC263-8-001
	2019	2019	H263 / H363 <sup>3</sup>			H267-IP-0602	C563	FSC263-8-1901
KLX450R	2008	2012	H263 / H363 <sup>3</sup>			H267	C263	FSC263-8-001

REMARKS

1 with cushions

2 works only with OEM inner hub



Actuation	BTL	Single Spring Kit	Steel Basket	Oil Filler Cap	Engine Plug Kit	Backing Plate Kit	Cushions	Spring Kit
								CS068-4-0116
								CS068-4-0116
						BP217	CU199	
			HS257 <sup>1</sup>			BP217	CU199	CS357-5-0109
	BTL217	SS217	HS257 <sup>1</sup>	OC217		BP217	CU199	CS357-5-0109
	BTL217	SS217	HS257 <sup>1</sup>	OC217		BP217	CU199	CS357-5-0109
			HS257 <sup>1</sup>			BP217	CU199	CS357-5-0109
	BTL263	SS263	HS263 / HS363 <sup>1</sup>	OC217		BP263	CU263	CS264-5-0409
CB363 / AK363	BTL263	SS263	HS263 / HS363 <sup>1</sup>	OC217		BP263	CU263	CS264-5-0409
CB463	BTL263	SS263	HS263 / HS363 <sup>1</sup>			BP263	CU263	CS264-5-0409
	BTL263	SS263	HS263 / HS363 <sup>1</sup>			BP263	CU263	CS264-5-0409
	BTL263	SS263	HS263 / HS363 <sup>1</sup>	OC217		BP263	CU263	CS264-5-0409

# SUZUKI



Model	From	Till	Clutch Basket	Inner Hub	Pressure Plate	IH/PP Kit	Clutch Cover	FSC-Kit
RM85	2002	2019	H060-002	H067	H066			
RM125	1992	2008	H027					
RM250	2006	2008	H192				C046	
RM-Z250	2007	2009	H274 <sup>1</sup>	H276	H275		C474	FSC357-8-001
	2010	2019	H374 <sup>1</sup>	H276	H275		C474	FSC357-8-001
RM-Z450	2008	2008	H430 <sup>1</sup>			H338	C330	FSC230-8-001
	2009	2014	H430 <sup>1</sup>			H338	C330	FSC230-8-001
	2015	2019	H430 <sup>1</sup>			H438	C330	FSC230-8-001
RMX450Z	2010	2011	H430 <sup>1</sup>			H338	C330	FSC230-8-001
	2017	2019	H430 <sup>1</sup>			H338	C330	FSC230-8-001

REMARKS

1 with cushions



Actuation	BTL	Single Spring Kit	Steel Basket	Oil Filler Cap	Engine Plug Kit	Backing Plate Kit	Cushions	Spring Kit
						BP026		CS294-5-0109
						BP192		
	BTL274	SS274		OC230		BP217	CU199	CS357-5-0109
	BTL274	SS274		OC230		BP374	CU199	CS357-5-0109
AK330	BTL330	SS330	HS430 <sup>1</sup>	OC230		BP230	CU230	CS330-6-0509
AK330	BTL330	SS330	HS430 <sup>1</sup>	OC230		BP230	CU230	CS330-6-0509
AK330	BTL330		HS430 <sup>1</sup>	OC230		BP230	CU230	CS330-6-0509
	BTL330	SS330	HS430 <sup>1</sup>	OC230		BP230	CU230	CS330-6-0509
	BTL330		HS430 <sup>1</sup>	OC230		BP230	CU230	CS330-6-0509



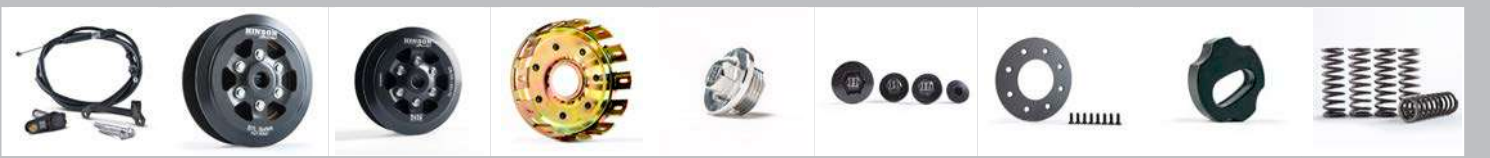
Model	From	Till	Clutch Basket	Inner Hub	Pressure Plate	IH/PP Kit	Clutch Cover	FSC-Kit
65SX	1999	2019	H286					
85SX	2006	2017	H249	H249-IH-0116	H249-PP-0116		C249	
	2018	2019		H472-IH-1801	H472-PP-1801		C472-1801	
105SX	2006	2011	H249	H249-IH-0116	H249-PP-0116		C249	
125/144SX	2008	2008	H091 <sup>1/3</sup>	H110	H074		C091	FSC094-7-001
125/150SX	2009	2015	H091 <sup>1</sup>	H110	H074		C091	FSC094-7-001
	2016	2018	H091 <sup>1</sup>	H110	H074		C191	FSC094-7-001
	2019	2019		H505-IH-1901	H505-PP-1901		C505-1901	
250SX	2003	2012	H200	H202	H201		C200	
	2013	2016		H370	H371	H373	C500	FSC373-8-001
	2017	2017		H570	H571	H573	C600	FSC373-8-001
	2018	2019		H570	H571	H573	C700-1801	FSC373-8-001
250SX-F	2005	2012	H255 <sup>1</sup>	H222	H109		C355	FSC094-8-001
	2013	2015		H754	H478	H755	C477	FSC755-8-001
	2016	2018		H954	H578	H855	C677	FSC855-7-001
	2019	2019		H793-IH-1901	H793-PP-1901		C677	FSC373-7-1901
250SX-F FE	2015	2017		H954	H578	H855	C677	FSC855-7-001
350SX-F	2011	2015		H754	H478	H755	C477	FSC755-8-001
	2016	2018		H954	H578	H855	C677	FSC855-7-001

REMARKS

1 with cushions

3 two gear

2 one gear



Actuation	BTL	Single Spring Kit	Steel Basket	Oil Filler Cap	Engine Plug Kit	Backing Plate Kit BP089	Cushions CU286	Spring Kit
				OC255		BP026	CU299	CS294-5-0109
				OC255		BP026	CU299	CS294-5-0109
				OC255		BP026	CU299	CS294-5-0109
				OC255				CS189-6-1015
	BTL470			OC255				CS373-1-0116
	BTL570			OC255				CS373-1-0116
	BTL570			OC255				CS373-1-0116
	BTL255			OC477		BP026	CU299	CS294-5-0109
	BTL477			OC477				CS755-6-0116
	BTL577			OC255				CS855-6-0116
	BTL577							CS373-1-0116
	BTL577			OC255				CS855-6-0116
	BTL477			OC477				CS755-6-0116
	BTL577			OC255				CS855-6-0116



Model	From	Till	Clutch Basket	Inner Hub	Pressure Plate	IH/PP Kit	Clutch Cover	FSC-Kit	
450SX-F	2007	2011	H270 <sup>1</sup>			H273	C270		
	2012	2012		H370			C270		
	2013	2015		H370	H371	H373	C454	FSC373-8-001	
	2016	2019		H570	H571	H573	C654	FSC373-8-001	
450SX-F FE	2012	2014		H370	H371	H373	C454	FSC373-8-001	
	2015	2018		H570	H571	H573	C654	FSC373-8-001	
505SX-F	2007	2008	H270 <sup>1</sup>			H273	C270		
125/200EXC	2008	2008	H190 <sup>1/2</sup> / H091 <sup>1/3</sup>	H110	H074		C091	FSC094-7-001	
	2009	2015	H091 <sup>1</sup>	H110	H074		C091	FSC094-7-001	
	2016	2016	H091 <sup>1</sup>	H110	H074			FSC094-7-001	
250/300EXC	2004	2012	H200	H202	H201		C200		
	2013	2016		H370	H371	H373	C500	FSC373-8-001	
	2017	2017		H570	H571	H573	C600	FSC373-8-001	
250/300EXC/TPI	2018	2019		H570	H571	H573	C700-1801	FSC373-8-001	
250EXC-F	2007	2013	H255 <sup>1</sup>	H222	H109		C355	FSC094-8-001	
	2014	2016		H370	H371	H373	C477	FSC373-8-001	
	2017	2019		H570	H571	H573	C677	FSC373-8-001	
350EXC-F	2012	2016		H370	H371	H373	C477	FSC373-8-001	
	2017	2019		H570	H571	H573	C677	FSC373-8-001	
400EXC	2009	2011	H270 <sup>1</sup>				C354		
REMARKS			1 with cushions		3 two gear				
			2 one gear						





Actuation	BTL	Single Spring Kit	Steel Basket	Oil Filler Cap	Engine Plug Kit	Backing Plate Kit	Cushions	Spring Kit
	BTL370					BP270	CU199	CS189-6-1015
	BTL470			OC477				CS373-1-0116
	BTL570			OC255				CS373-1-0116
	BTL470			OC477				CS373-1-0116
	BTL570			OC255				CS373-1-0116
	BTL370					BP270	CU199	CS189-6-1015
				OC255		BP026	CU299	CS294-5-0109
				OC255		BP026	CU299	CS294-5-0109
				OC255		BP026	CU299	CS294-5-0109
				OC255				CS189-6-1015
	BTL470			OC255				CS373-1-0116
	BTL570			OC255				CS373-1-0116
	BTL570			OC255				CS373-1-0116
	BTL255			OC477		BP026	CU299	CS294-5-0109
	BTL470			OC477				CS373-1-0116
	BTL570			OC255				CS373-1-0116
	BTL470			OC477				CS373-1-0116
	BTL570			OC255				CS373-1-0116
						BP270	CU199	



Model	From	Till	Clutch Basket	Inner Hub	Pressure Plate	IH/PP Kit	Clutch Cover	FSC-Kit
450EXC-F	2017	2019		H570	H571	H573	C654	FSC373-8-001
500EXC	2012	2015		H370	H371	H373	C454	FSC373-8-001
	2016	2016		H570	H571	H573	C454	FSC373-8-001
500EXC-F	2017	2019		H570	H571	H573	C654	FSC373-8-001
530EXC(-R)	2008	2011		H270			C354	
125XC-W	2017	2018	H091 <sup>1</sup>	H110	H074		C191	FSC094-7-001
	2019	2019		H505-IH-1901	H505-PP-1901		C505-1901	
144XC	2008	2008	H190 <sup>1/2</sup> / H091 <sup>1/3</sup>	H110	H074		C091	FSC094-7-001
150XC	2010	2015	H091 <sup>1</sup>	H110	H074		C091	FSC094-7-001
150XC-W	2017	2018	H091 <sup>1</sup>	H110	H074		C191	FSC094-7-001
150XC-W	2019	2019		H505-IH-1901	H505-PP-1901		C505-1901	
200XC	2008	2009	H091 <sup>1</sup>	H110	H074		C091	FSC094-7-001
200XC-W	2008	2015	H091 <sup>1</sup>	H110	H074		C091	FSC094-7-001
200XC-W	2016	2016	H091 <sup>1</sup>	H110	H074			FSC094-7-001
250XC(-W)	2006	2012	H200	H202	H201		C200	
250XC(-W)	2013	2016		H370	H371	H373	C500	FSC373-8-001
250XC(-W)	2017	2017		H570	H571	H573	C600	FSC373-8-001
250XC(-W)/TPI	2018	2019		H570	H571	H573	C700-1801	FSC373-8-001
250XC-F	2008	2012	H255 <sup>1</sup>	H222	H109		C355	FSC094-8-001

REMARKS

1 with cushions



Actuation	BTL	Single Spring Kit	Steel Basket	Oil Filler Cap	Engine Plug Kit	Backing Plate Kit	Cushions	Spring Kit
	BTL570			OC255				CS373-1-0116
	BTL470			OC477				CS373-1-0116
	BTL570			OC477				CS373-1-0116
	BTL570			OC255				CS373-1-0116
	BTL454					BP270	CU199	
				OC255		BP026	CU299	CS294-5-0109
				OC255		BP026	CU299	CS294-5-0109
				OC255		BP026	CU299	CS294-5-0109
				OC255		BP026	CU299	CS294-5-0109
				OC255		BP026	CU299	CS294-5-0109
				OC255		BP026	CU299	CS294-5-0109
				OC255		BP026	CU299	CS294-5-0109
				OC255		BP026	CU299	CS294-5-0109
				OC255		BP026	CU299	CS294-5-0109
				OC255		BP026	CU299	CS294-5-0109
				OC255		BP026	CU299	CS294-5-0109
				OC255		BP026	CU299	CS294-5-0109
	BTL470			OC255				CS189-6-1015
	BTL570			OC255				CS373-1-0116
	BTL570			OC255				CS373-1-0116
	BTL255			OC477		BP026	CU299	CS294-5-0109

# KTM



Model	From	Till	Clutch Basket	Inner Hub	Pressure Plate	IH/PP Kit	Clutch Cover	FSC-Kit
250XC-F	2008	2013	H255 <sup>1</sup>	H222	H109		C355	FSC094-8-001
250XC-F	2014	2016		H370	H371	H373	C477	FSC373-8-001
300XC(-W)	2006	2012	H200	H202	H201		C200	
300XC(-W)	2013	2016		H370	H371	H373	C500	FSC373-8-001
300XC(-W)	2017	2018		H570	H571	H573	C600	FSC373-8-001
300XC/XC-W TPI	2019	2019		H570	H571	H573	C700-1801	FSC373-8-001
350XC-F	2011	2015		H754	H478	H755	C477	FSC755-8-001
350XC-F	2016	2018		H954	H578	H855	C677	FSC855-7-001
	2019	2019		H793-IH-1901	H793-PP-1901		C677	FSC373-7-1901
350XC-F	2012	2016		H370	H371	H373	C477	FSC373-8-001
450XC-F	2009	2011	H270 <sup>1</sup>			H273	C270	
450XC-F	2013	2015		H370	H371	H373	C454	FSC373-8-001
450XC-F	2016	2019		H570	H571	H573	C654	FSC373-8-001
400/450XC-W(R)	2008	2011	H270 <sup>1</sup>				C354	
450XC-W	2012	2015		H370	H371	H373	C454	FSC373-8-001
450XC-W	2016	2016		H570	H571	H573	C454	FSC373-8-001
500XC-W	2012	2015		H370	H371	H373	C454	FSC373-8-001
500XC-W	2016	2016		H570	H571	H573	C454	FSC373-8-001
505XC-F	2008	2011	H270 <sup>1</sup>			H273	C270	
530XC-W	2008	2011	H270 <sup>1</sup>				C354	

REMARKS

1 with cushions

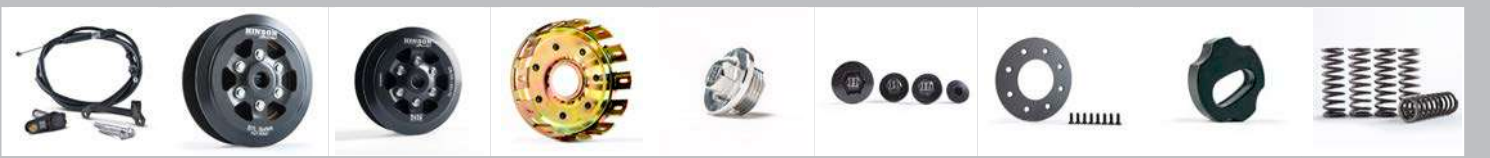


Actuation	BTL	Single Spring Kit	Steel Basket	Oil Filler Cap	Engine Plug Kit	Backing Plate Kit	Cushions	Spring Kit
	BTL255			OC477		BP026	CU299	CS294-5-0109
	BTL470			OC477				CS373-1-0116
				OC255				CS189-6-1015
	BTL470			OC255				CS373-1-0116
	BTL570			OC255				CS373-1-0116
	BTL570			OC255				CS373-1-0116
	BTL477			OC477				CS755-6-0116
	BTL577			OC255				CS855-6-0116
	BTL577							CS373-1-0116
	BTL470			OC477				CS373-1-0116
	BTL370					BP270	CU199	CS189-6-1015
	BTL470			OC477				CS373-1-0116
	BTL570			OC255				CS373-1-0116
						BP270	CU199	
	BTL470			OC477				CS373-1-0116
	BTL570			OC477				CS373-1-0116
	BTL470			OC477				CS373-1-0116
	BTL570			OC477				CS373-1-0116
	BTL370					BP270	CU199	CS189-6-1015
						BP270	CU199	

# Husqvarna



Model	From	Till	Clutch Basket	Inner Hub	Pressure Plate	IH/PP Kit	Clutch Cover	FSC-Kit
TC65	2017	2019	H286					
TC85	2014	2017	H249	H249-IH-0116	H249-PP-0116		C249	
	2018	2019		H472-IH-1801	H472-PP-1801		C472-1801	
TC125	2014	2015	H091 <sup>1</sup>	H110	H074		C091	FSC094-7-001
	2016	2018	H091 <sup>1</sup>	H110	H074		C191	FSC094-7-001
	2019	2019		H505-IH-1901	H505-PP-1901		C505-1901	
TE125	2014	2016	H091 <sup>1</sup>	H110	H074		C091	FSC094-7-001
TX125/TE150	2017	2018	H091 <sup>1</sup>	H110	H074		C191	FSC094-7-001
	2019	2019		H505-IH-1901	H505-PP-1901		C505-1901	
TC/TE/TXC250	2010	2013	H157 <sup>1</sup>				C157	FSC094-7-001
FC250	2014	2015		H754	H478	H755	C477	FSC755-8-001
FC250	2016	2018		H954	H578	H855		FSC855-7-001
	2019	2019		H793-IH-1901	H793-PP-1901		C677	FSC373-7-1901
FE250	2014	2016		H370	H371	H373	C477	FSC373-8-001
FE250	2017	2019		H570	H571	H573	C677	FSC855-7-001
TC250/TE250-300	2014	2016		H370	H371	H373	C500	FSC373-8-001
TC250/TE250-300/ TX300	2017	2017		H570	H571	H573	C600	FSC373-8-001
REMARKS			1 with cushions					



Actuation	BTL	Single Spring Kit	Steel Basket	Oil Filler Cap	Engine Plug Kit	Backing Plate Kit	Cushions	Spring Kit
						BP089	CU286	
				OC255		BP026	CU299	CS294-5-0109
						BP026	CU299	CS294-5-0109
				OC255		BP026	CU299	CS294-5-0109
						BP026	CU299	CS294-5-0109
							CU286	CS294-5-0109
	BTL477			OC477				CS755-6-0116
	BTL577			OC477				CS755-6-0116
	BTL577							CS373-1-0116
	BTL470			OC477				CS373-1-0116
	BTL570			OC255				CS755-6-0116
	BTL470			OC255				CS373-1-0116
	BTL570			OC255				CS373-1-0116

# Husqvarna



Model	From	Till	Clutch Basket	Inner Hub	Pressure Plate	IH/PP Kit	Clutch Cover	FSC-Kit
FC350	2014	2015		H754	H478	H755	C477	FSC755-8-001
FC350	2016	2018		H954	H578	H855	C677	FSC855-7-001
	2019	2019		H793-IH-1901	H793-PP-1901		C677	FSC373-7-1901
FE350	2014	2016		H370	H371	H373	C477	FSC373-8-001
FE350	2017	2019		H570	H571	H573	C677	FSC373-7-1901
FX350	2017	2018		H954	H578	H855	C677	FSC855-7-001
	2019	2019		H793-IH-1901	H793-PP-1901		C677	FSC373-7-1901
FE450/501	2014	2015		H370	H371	H373	C454	FSC373-8-001
FE450/501	2016	2016		H570	H571	H573	C454	FSC373-8-001
FE450/501	2017	2019		H570	H571	H573	C654	FSC373-8-001
FX450	2017	2019		H570	H571	H573	C654	FSC373-8-001
FC450	2014	2015		H370	H371	H373	C454	FSC373-8-001
FC450	2016	2019		H570	H571	H573	C654	FSC373-8-001
FR450RALLY	2016	2016		H570	H571	H573	C454	FSC373-8-001
FR450RALLY	2017	2019		H570	H571	H573	C654	FSC373-8-001
FS450	2015	2015					C454	FSC373-8-001
FS450	2016	2019					C654	FSC373-8-001
FE501S	2015	2015		H370	H371	H373	C454	FSC373-8-001
FE501S	2016	2016		H570	H571	H573	C454	FSC373-8-001





Actuation	BTL	Single Spring Kit	Steel Basket	Oil Filler Cap	Engine Plug Kit	Backing Plate Kit	Cushions	Spring Kit
	BTL477			OC477				CS755-6-0116
	BTL577			OC255				CS755-6-0116
	BTL577							CS373-1-0116
	BTL470			OC477				CS373-1-0116
	BTL570			OC255				CS373-1-0116
	BTL577			OC477				CS755-6-0116
	BTL577							CS373-1-0116
	BTL470			OC477				CS373-1-0116
	BTL570			OC477				CS373-1-0116
	BTL570			OC255				CS373-1-0116
	BTL570			OC255				CS373-1-0116
	BTL470			OC477				CS373-1-0116
	BTL570			OC255				CS373-1-0116
	BTL570			OC477				CS373-1-0116
	BTL570			OC255				CS373-1-0116
	BTL670			OC477				CS373-1-0116
	BTL670			OC255				CS373-1-0116
	BTL470			OC477				CS373-1-0116
	BTL570			OC477				CS373-1-0116

# ATV



Model	From	Till	Clutch Basket	Inner Hub	Pressure Plate	IH/PP Kit	Clutch Cover	FSC-Kit
<b>HONDA</b>								
TRX400X	2009	2014	H057					
TRX450R	2004	2014	H224	H165	H164-002	H223	C224	FSC154-8-001
TRX450ER	2006	2014	H224	H165	H164-002	H223	C224	FSC154-8-001
<b>YAMAHA</b>								
YFZ450	2007	2009	H313	H198	H212		C196	FSC213-8-001
	2012	2013	H313	H198	H212		C196	FSC213-8-001
YFZ450 9-PLATE	2007	2009	H313	H198	H214 <sup>2</sup>		C196	FSC196-9-001
YFZ450R	2009	2010	H216 / H316 <sup>1</sup>	H198	H212		C196	FSC213-8-001
YFZ450R	2011	2013	H413	H198	H212		C196	FSC213-8-001
YFZ450R	2014	2019	H313				C196	
YFZ450X	2010	2010	H216	H198	H212		C196	FSC213-8-001
	2011	2011	H413	H198	H212		C196	FSC213-8-001
YFZ450X 9-PLATE	2010	2011	H413	H198	H214 <sup>2</sup>		C196	FSC196-9-001
YFM700R RAPTOR	2006	2019	H313					FSC213-8-001
<b>KAWASAKI</b>								
KFX450R	2008	2014	H295				C295	FSC263-8-001
REMARKS			1 with cushions	3 needs to be used with the Hinson FSC-Kit				
			2 includes FSC-Kit					



Actuation	BTL	Single Spring Kit	Steel Basket	Oil Filler Cap	Engine Plug Kit	Backing Plate Kit	Cushions	Spring Kit
						BP056		
	BTL154	SS189	HS224	OC154X	EPK489	BP224-ST		CS189-6-1015
	BTL154	SS189	HS224	OC154X	EPK489	BP224-ST		CS189-6-1015
	BTL213	SS213		OC213		BP413		CS216-6-0315
	BTL213	SS213		OC213		BP413		CS216-6-0315
				OC213		BP413		CS216-6-0315
	BTL213 <sup>3</sup>	SS213	HS216 / HS316 <sup>1</sup>	OC213		BP054	CU216	CS216-6-0315
	BTL213 <sup>3</sup>	SS213		OC213		BP213		CS216-6-0315
	BTL213 <sup>3</sup>	SS213		OC213		BP213		CS216-6-0315
	BTL213 <sup>3</sup>	SS213		OC213		BP054		CS216-6-0315
	BTL213 <sup>3</sup>	SS213		OC213		BP213		CS216-6-0315
				OC213		BP213		CS216-6-0315
						BP213		CS216-6-0315
	BTL263	SS263	HS295	OC217		BP263	CU263	CS264-5-0409

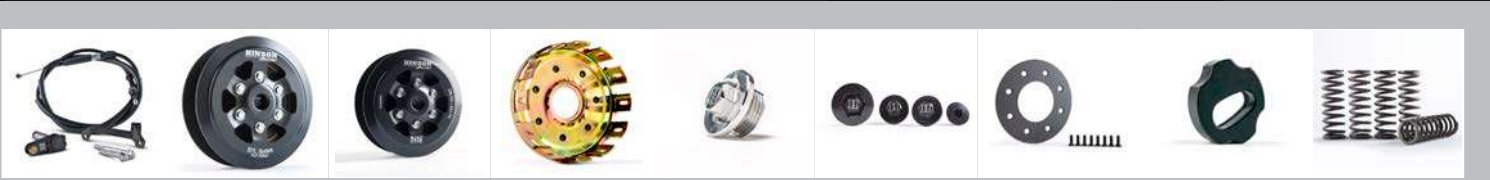
# ATV



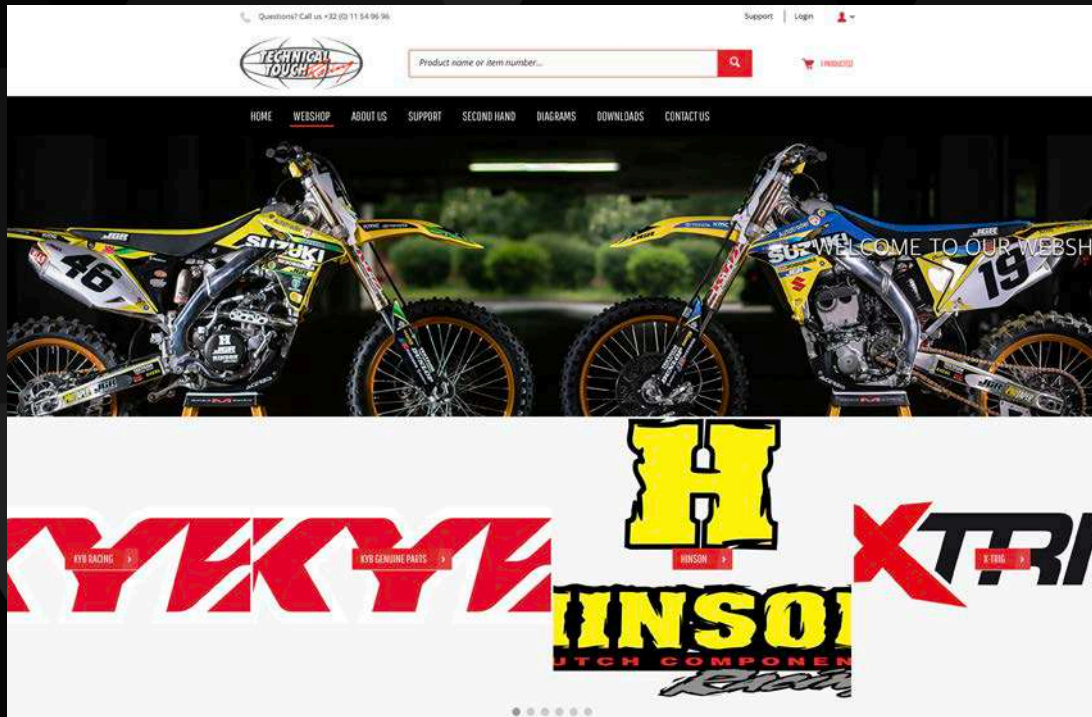
Model	From	Till	Clutch Basket	Inner Hub	Pressure Plate	IH/PP Kit	Clutch Cover	FSC-Kit
<b>KTM</b>								
450/525 XC Sport ATV	2008	2011					C254	
450/505 SX ATV	2009	2011	H270 <sup>1</sup>			H273	C270	
<b>SUZUKI</b>								
LT-Z400	2003	2011						FSC095-9-001
LT-R450	2008	2011	H268			H338	C268	FSC230-8-001
<b>CAN-AM</b>								
DS450	2008	2014	H503					
<b>POLARIS</b>								
OUTLAW 450/525	2008	2011					C254	

REMARKS

1 with cushions



Actuation	BTL	Single Spring Kit	Steel Basket	Oil Filler Cap	Engine Plug Kit	Backing Plate Kit	Cushions	Spring Kit
	BTL254							
	BTL370					BP270	CU199	CS189-6-1015
								CS095-6-001
	BTL330	SS330		OC230				CS330-6-0509
	BTL254							



## WEBSHOP

Buy your parts online via our webshop:  
easy, fast and a lot of advantages!

- Easy navigating through product categories
- Easy navigating on bike model & year
- direct information on available stock and most recent prices
- The shop is available in four different languages
- Use the QUICK ADD button to order even quicker

Ask your login: [info@technical-touch.com](mailto:info@technical-touch.com)

# SOCIAL MEDIA



#TechnicalTouch #Hinson #Hinsonracing  
IG: @technicaltouchracing  
FB: Technical Touch Racing

Add us to your social network and share the passion.





**TECHNICAL TOUCH BVBA**  
**IZ Kristalpark**  
**Ondernemersstraat 20**  
**3920 LOMMEL - BELGIUM**

0032-(0)11/54.96.96  
info@technical-touch.com  
www.technical-touch.com